

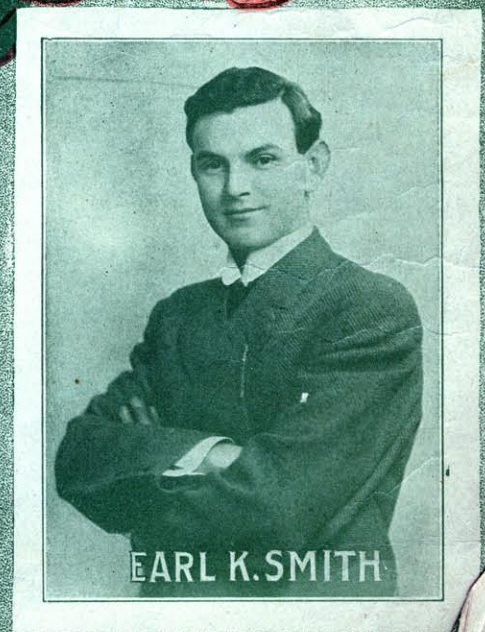
YOU'RE LIKE THE YOUNG APPLE BLOSSOM IS TO THE OLD APPLE TREE

Mary Abner



BY
EARL K. SMITH
AND
GEORGE A. LITTLE

TELL TAYLOR
MUSIC PUBLISHER
NEW YORK-CHICAGO



You're Like the Young Apple Blossom Is to the Old Apple Tree

Words by
GEO. A. LITTLE

Music by
EARL K. SMITH

In slow waltz time

mf *f*

p

Flow - ers must bloom in the spring - time,
Lov - ers all know hap - py hours, _____

p *Key #*

Sum - mer must fade in to fall, _____ Each heart must know of some
Birds al - ways know a love song, _____ Clouds oft at times hide the

sor - row Each lov - er hears cu - pid's call; _____
sun - shine E - ven the world may be wrong; _____

3

Mem'-ries of days in the or - chard — Come back in
 Still in my heart there's a sto - ry — Nev - er to

fan - cy to me, — One tree just bud - ding in
 fade with the time, — It is the sto - ry I

spring - time, Seemed that it whis - pered to me. *rall.*
 told you, Dear when you said you'd be mine. *rall.*

REFRAIN

p-mf *Slow with expression*

You're like the young ap - ple blos - som, is to the old ap - ple

tree, _____ Just like the dew to the ros - es, Sweetheart, you

are to me; _____ You are my sun-shine in Love - land,

Your love brings sweet mem - o - ry, _____ You're like the young ap-ple

blos - som, Is to the old ap-ple tree. _____ tree. _____

rall. e dim. *1 a tempo* *2*

rall. e dim. *a tempo*

Quartet for Male or Mixed Voices

REFRAIN *Slow with expression*

Arr. by Chas. Miller

1st Tenor or Alto *mf*
Alto
 You're like the young ap - ple blos - som Is to the old ap - ple tree, —

2d Tenor or Sop. (Melody) *mf*

Baritone
 You're like the young ap - ple blos - som Is to the old ap - ple tree, —

Bass *mf*

Just like the dew on the ros - es, Sweet-heart, you are to me; Dear, I love you!
 me;

Just like the dew on the ros - es, Sweet-heart, you are to me; Dear, I love you!
 me;

You are my sun-shine in Love - land, Your love brings sweet mem - o - ry, —

You are my sun-shine in Love - land, Your love brings sweet mem - o - ry, —

rall. e dim.
 You're like the young ap - ple blos - som, Is to the old ap - ple tree. — *ad lib.*

rall. e dim.
 You're like the young ap - ple blos - som, Is to the old ap - ple tree. —

Tell Taylor's Song Hits

Way Down South

This number is a big hit all over the world. They all clap hands in the chorus

Yoo-Hoo, That's Me

Another big hit for the summer season. You can have your friends join in the chorus, YOO-HOO

My Alabama Rose

A great big Southern song hit with a beautiful melody and good lyrics

Meet Me To-night

(For I Love You)

One of Mr. Taylor's best compositions. Just what you want for a good parlor song

O'er the Billowy Sea

Positively the best Bass Solo written in years. Also published For Baritone and Soprano

Ask your Dealer. If he doesn't have these numbers he will get them for you