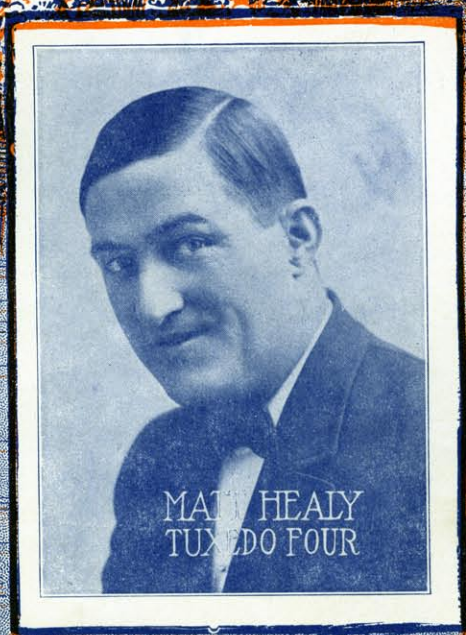


WAY DOWN SOUTH

Langford

WORDS and MUSIC BY
GEORGE FAIRMAN



MATT HEALY
TUXEDO FOUR

TUPPER & REED
POPULAR MUSIC 15c.

PUBLISHED BY
TELL TAYLOR
MUSIC PUBLISHER
CHICAGO - NEW YORK

WAY DOWN SOUTH

By GEO. FAIRMAN.

Modto

The piano introduction consists of two staves. The right hand features a series of chords and melodic fragments in a minor key, starting with a forte (*f*) dynamic. The left hand provides a steady bass accompaniment with chords and eighth-note patterns.

mf

TILL READY

I know a place where sweet mag-
I've got a gal an ev - er -

The first vocal line begins with a rest, followed by the lyrics. The piano accompaniment continues with chords and a melodic line in the right hand, and a bass line in the left hand. Dynamics include *p* and *mf*.

no - lias bloom, Way down South; Where the
lov - in' gal, Way down South; And I

The second vocal line continues the melody. The piano accompaniment features a more active right hand with chords and a melodic line, and a steady bass line. Dynamics include *mf*.

air is scent - ed with their sweet per - fume, Way down South;
am her beau, be - cause she told me so, Way down South;

The third vocal line concludes the piece. The piano accompaniment continues with chords and a melodic line in the right hand, and a steady bass line in the left hand.

By a stream where the wa - ters flow
In the spring wed - ding bells will ring

Far a - way from the cold and snow, Down there's where the
Then you'll hear all the dark - ies sing, Way down where the

wa - ter - mel - lons grow, That's
sweet po - ta - -toes grow, She

a little slower

where I long to be For some - one waits for me.
won my heart a - way 'Twas on one sum - mer's day.

a little slower

REFRAIN, *Brightly*

p-ff

Where the sun is al-ways shin - ing To be there my heart is pin - ing,

Where the birds are sing-ing all the time Far be-low the Ma-son Dix-on line;

Where the fields are white with cot - ton When you're gone you're not for - got - ten,

⊕ TO LAST ENDING

In that lov-ing land of milk and hon - ey, Way down South, South.

LAST ENDING *p ad lib.* *ff a tempo*

got - ten. Sing one song of my old Ken-tucky Home. Way down South.

WAY DOWN SOUTH.

Male Quartet.

Arr. by Chas. Miller.

TENOR I.
LEAD.

BARITONE.
BASS.

Where the sun is al - ways shin - ing
(Down South) (Down

To be there my heart is pin - ing Where the birds are sing - ing
South) ('Tis there)

all the time — Far be - low the Mas - on Dix - on line —
(Down home) (Down

Where the fields are white with cot - ton When you're gone you're not for -
South) (Down South)

got - ten Sing one song of my old Ken - tucky home Way down South.
pp *Slow* *ff* *a tempo*
pp *Slow* *ff* *a tempo*

TELL TAYLOR'S NEW BALLAD HIT

WITH
Piano
Arrangement

I'M GOING TO WRITE YOU A LETTER

TRY IT OVER BEAUTIFUL NEW SONG



ASK YOUR DEALER FOR IT OR SEND US

\$1.00

AND WE WILL SEND YOU



SIX OF OUR HITS INCLUDING

I'M GOING TO WRITE YOU A LETTER - *Way Down South*
"RAG-RAG-RAG" - *Under the Old Oak Tree*
O'er the Billowy Sea and **THAT SUBWAY RAG**

TELL TAYLOR — MUSIC PUBLISHER
GRAND OPERA HOUSE, CHICAGO, ILL