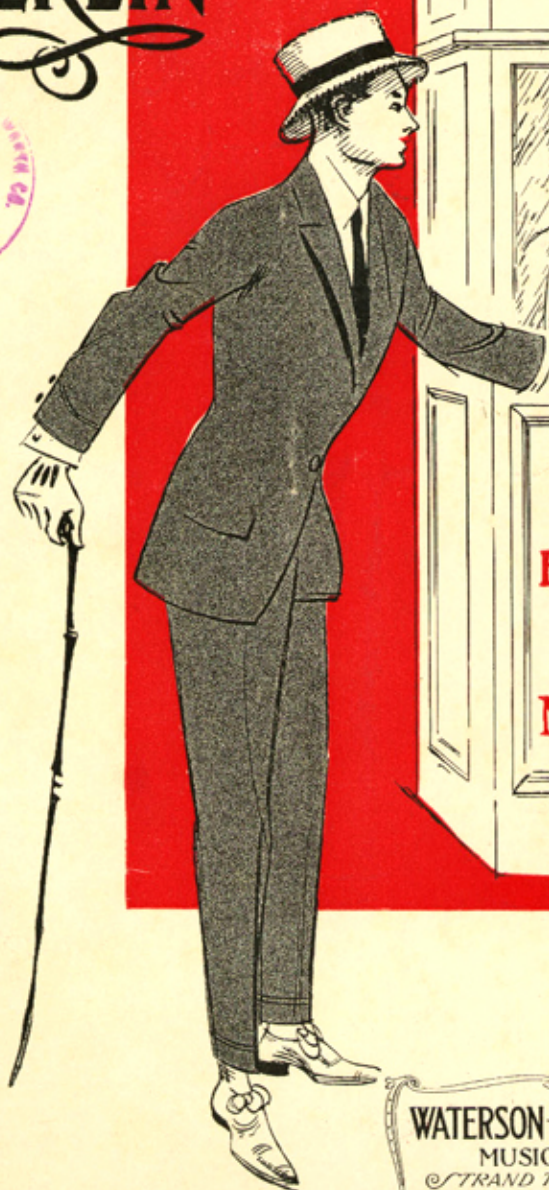


IF THAT'S YOUR IDEA OF A WONDERFUL TIME ~ TAKE ME HOME

WORDS AND MUSIC
BY

**IRVING
BERLIN**



MADE IN U.S.A.
SOLD IN 100 STORES

JOB
FREW

WATERSON-BERLIN & SNYDER CO.
MUSIC PUBLISHERS
STRAND THEATRE BUILDING
BROADWAY AT 47TH ST. N.Y.

TRY THIS ON YOUR PIANO

I WANT TO GO BACK TO MICHIGAN

(DOWN ON THE FARM)

Words and Music by
Irving Berlin

Moderato

The piano introduction consists of two staves. The right hand starts with a series of chords and eighth notes, while the left hand provides a bass line with chords and single notes. The tempo is marked 'Moderato' and the dynamics include 'ff' and 'f'.

till ready

I was born in Mich-i - gan,
You can keep your cab - ar - ets,

The first line of lyrics is accompanied by piano accompaniment. The right hand has a melody with eighth notes and a final half note. The left hand has a bass line with chords. Dynamics include 'p' and 'f'.

And I wish and wish a - gain, That I was back _____ in the
Where they turn nights in - to days, I'd rath - er be _____ where they

The second line of lyrics is accompanied by piano accompaniment. The right hand has a melody with eighth notes and a final half note. The left hand has a bass line with chords. Dynamics include 'p' and 'f'.

Copyright MCMXIV by Waterson, Berlin & Snyder Co.
Copyright Canada MCMXIV by Waterson, Berlin & Snyder Co.
International Copyright Secured.

For sale by all dealers

If That's Your Idea Of A Wonderful Time

(Take Me Home)

Words and Music by
IRVING BERLIN

Valse moderato

The piano introduction is in 3/4 time, key of B-flat major. It begins with a forte (f) dynamic. The right hand features a series of chords and eighth-note patterns, while the left hand provides a steady bass line with quarter notes and eighth notes.

John-ny took Ger-ald-ine out one
John-ny looked fool-ish and said "My

§ Till ready

The first line of the song features a vocal melody in the right hand and piano accompaniment in the left hand. The piano part is marked piano (p) and consists of chords and eighth-note patterns. A section marked 'Till ready' is indicated by a double bar line and a section symbol (§).

night to show her a won-der-ful time, ——— When they sat down in a
dear the eve-ning has on-ly be-gun, ——— I'll take you down to a

The second line of the song continues the vocal melody and piano accompaniment. The piano part features a variety of chord voicings and rhythmic patterns.

Ca - bar - et, He bought two ei - gars for a dime. ———
pic - ture show, Where we'll have a bar-rel of fun. ———

The third line of the song concludes the vocal melody and piano accompaniment. The piano part ends with a final chord and a few eighth notes.

“Bring us a cou - ple of sod - as John - ny cried” when the
I know the fel - low who owns the place, I’ll ask him to

wai - ter drew near, Af - ter an hour Miss
pass us in - side, Ger - ald - ine looked in - to

Ger - ald - ine whis - pered in John - ny’s ear.
John - ny’s face shak - ing her head she cried:

CHORUS

If that’s your i - dea of a won - der - ful time take me home, Take me

p-f

home, — I want you to know that I'm chok-ing — From that five cent ci -

gar that you're smok-ing, — You came out with a one dol-lar bill,

You've got eigh-ty cents left of it still, If that's your i - dea of a

won-der-ful time take me home. — If home. —

1. 2.

D.S.

If that's your idea. 3



Irving Berlin

The Song Genius
of
The World
says:~

This song surpasses all
my previous efforts.
I can safely say ~ this is
the best song I ever wrote.

"Along Came Ruth"

CHORUS

I was grow - ing ver - y fond of Mol - ly When a -

long came Ruth, a - long came Ruth, I thought an aw - ful lot of

Dol - ly When Ruth came a - long, My head be - gan to "Mer - ry - go - round", I

Copyright 1914 by Waterson, Berlin & Snyder Co., Strand Theatre Bldg Broadway at 47th St. N.Y.

International Copyright Secured

Copyright Canada 1914 by Waterson, Berlin & Snyder Co.